

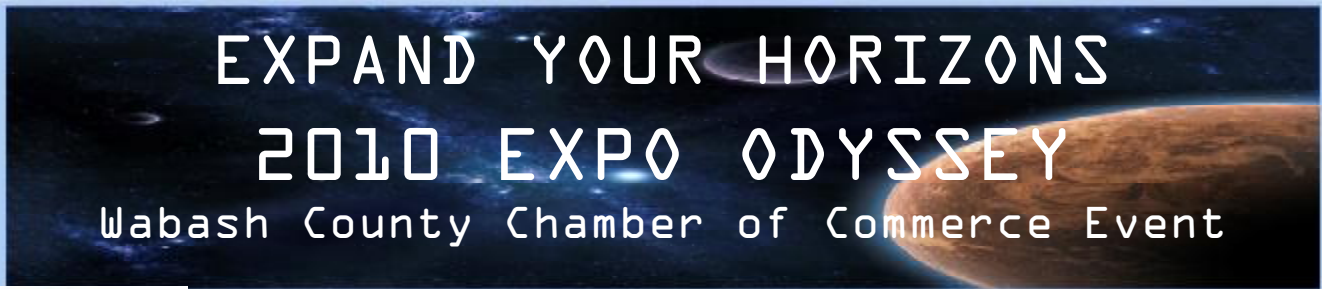


# MEMBER CONNECTION

January 2010

210 S. Wabash St.  
Wabash, Indiana 46992  
Voice: 260-563-1168  
Fax: 260-563-6920

Kimberly Pinkerton, Editor  
Beth Miller, Layout & Design  
Email: [info@wabashchamber.org](mailto:info@wabashchamber.org)  
URL: [www.wabashchamber.org](http://www.wabashchamber.org)



## TOP 10 REASONS TO BE AT THIS YEAR'S EXPO

10. New expanded booth layout including Ford Theater
9. New single entrance and traffic flow pattern
8. Continuous entertainment and presentations on gym stage
7. Vendor2Vendor Event with Open Mic for Elevator Pitch
6. More than 2000 visitors attend!
5. Networking!!!
4. Increased Pre-show Marketing
3. Best place to make contacts with businesses and customers
2. Early registration saves \$\$\$ and costs only pennies a day for year-long returns

**And the #1 reason to attend the Expo  
It is the most economical way to grow your business!!**

*Bob James, Border Patrol Curbscaping, LLC, states, "This is a great show. I get half of my business from this show."*

SATURDAY, MARCH 6 — 9:00 a.m. - 4:00 p.m.

SUNDAY, MARCH 7 — 11:00 a.m. - 4:00 p.m.

Chamber members

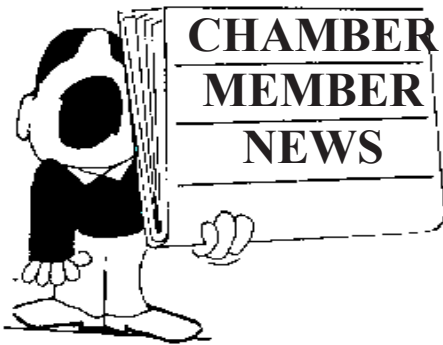
\$250 before February 5, 2010  
\$300 after February 5, 2010

Non Members

\$375 before February 5, 2010  
\$425 after February 5, 2010

Contact the Chamber office to reserve your spot now!

260-563-1168 [www.wabashchamber.org](http://www.wabashchamber.org) [info@wabashchamber.org](mailto:info@wabashchamber.org)



## HAVE A NEWSWORTHY ARTICLE OR EVENT YOU'D LIKE US TO PUBLISH?

Are you holding a special promotion, event or want to congratulate and recognize an employee? We are happy to share your news with the business community. The Chamber newsletter deadline for article submission is the 3rd Monday of the month prior to publication. Email your news and pictures to: [info@wabashchamber.org](mailto:info@wabashchamber.org) or fax news to 260.563.6920.

## PRESS RELEASES

Please feel free to add us to your Media list for all of your Press Release articles so that we too can announce your news. If you would like to submit your Press Release to us, we would be more than happy to send them out to the media for you.

Congratulations to **Milliner Printing Company, Inc.**, who is celebrating its 60th year in business. Founded in 1950 by Bob Milliner, the company began operations on Canal Street in downtown Wabash, and has been operating from its current location at 425 South Wabash Street since 1964. Milliner Printing Company, Inc. is owned by Tim Eslava, who has been with the company since 1973. Telephone: 260.563.5717

**Visionary Web, LLC and Visionary Computers, LLC** is proud to announce their selection by the Indiana Small Business Development Center as a finalist for the Edge Award in the Established Business Category. The ISBDC EDGE Awards celebrate Economic Development and Growth through Entrepreneurship. EDGE Award recipients fall into one of two categories: Emerging or Established businesses. Eligibility is limited to clients of the ISBDC through one-on-one confidential counseling through a trained ISBDC business advisor, participation in ISBDC programming, or use of ISBDC tools and business resources. EDGE Award recipients have been selected locally by the regional ISBDC staff that works directly with the business. For more information about Visionary Web/Computers call 260.569.0260 or email: [www.visionarycomputers.com](http://www.visionarycomputers.com).

**Visionary Web, LLC** is proud to welcome two new staff members to their company. Sean Flaherty, *Account Manager* - Sean holds a degree from Ball State University and has over 12 years combined experience in Management and Sales. As the account manager, Sean is responsible for assisting in determining activities to be performed in addition to taking the tasks and duties assigned from the support specialist and determining the best way to implement them. Michael Green, *Web Designer* - Michael graduated with a M.S. in Immersive Mediated Environments from Indiana University in 2007. He also received two undergraduate degrees in Telecommunications and Communication & Culture from Indiana University and has completed an internship with Disney Interactive Studios. Michael has done work with Option Six where he worked with clients such as Toyota, Microsoft, and Eli-Lilly. Michael also teaches game design and visual media courses for ITT in Fort Wayne, IN.

**Pathfinder Community Connections**, the Community Development division of Pathfinder Services, will be providing **FREE** tax preparation assistance to people with low-to-moderate income this year, a savings of up to \$500! The Earned Income Tax Credit or EITC, provides tax credits to working adults and families with low or moderate incomes. Money can be used to pay down debts, buy things families need, or can be saved for the future. To find out if you qualify, please contact Katie Rodgers at Pathfinder Community Connections at (260) 356-0521 or e-mail her at [kr Rodgers@pathfinderservices.org](mailto:kr Rodgers@pathfinderservices.org).

The **Learn More Center** will host the 6th Annual GED Graduation and National Adult Education Honor Society Induction on January 22, 2010, at the Thomas Marshall Town Life Center. Honor Society Induction begins at 6:30 p.m. with the GED graduation and reception following. Currently, there are 37 GED graduates from the Learn More Center, and as the year-end results are obtained, there are over 40 possible GED recipients. This number compares to 23 total graduates from the Learn More Center in 2008. Families, friends, and the public are invited to attend this special milestone in the lives of those who have successfully completed their high school equivalency. Please make reservations by contacting the Learn More Center at 260.982.6138, toll free 1.877.363.6128 or email [info@learnmorecenter.org](mailto:info@learnmorecenter.org).

**Investment Center at Crossroads Bank** is pleased to announce Registered Representative Dorothea “Dottie” Cole’s new affiliation with the Investment Center. Contact info: Phone: 800. 377.4984 Email: [dcole@investcrossroads.com](mailto:dcole@investcrossroads.com)

Gene Miles, CEO, of First Farmers Financial Corp. and its principal subsidiary **First Farmers Bank & Trust**, announces that the acquisition of C.B. Bank Shares, Inc. and its principal subsidiary Central Bank, of Russiaville, Indiana was completed on Friday, December 4, 2009.

**PHP Scholarship Program Announces** - Physicians Health Plan recently announced their 22nd Annual Student Scholarship Program. Scholarships are available to high school seniors planning to pursue a career in a health-related field. There is no limit on the number of student applications accepted and application forms may be downloaded from their website: <http://www.phpni.com/images/pdf/ScholarshipApplication.pdf> Please note that all entries must be postmarked by February 26, 2010 to be eligible.

**Wabash Friends Counseling Center** reminds you of their upcoming Leadership Luncheons:

Jan 7	Developing Wisdom in Leaders: The Journey to Inspirational Decisions
Feb 11	Leadership During Lean Times
March 4	A Growth Path for Leaders
April 4	Followership

Cost is \$20 and includes a light lunch. To register, email [scott@wabashfriends.org](mailto:scott@wabashfriends.org).

History Hunters Event – “Up Close with Mary Todd Lincoln” by Heather Allen, Thursday, January 28 at 12p.m. at the **Wabash County Historical Museum**. For more information please call 260.563.9070 or visit [www.wabashmuseum.org](http://www.wabashmuseum.org)

**Upcoming Honeywell Center Events:**

*The Drowsy Chaperone* Wednesday, January 27 7:00 p.m.  
presented by Wabash Valley Music Association

WBCL welcomes *Phillips, Craig & Dean* Fri., Feb. 5 7:30 pm  
sponsored by Halderman Farm Management Service  
and Grandstaff-Hentgen Funeral Service

Register of buy tickets online at [www.honeywellcenter.org](http://www.honeywellcenter.org)!

**LABOR FORCE ESTIMATES FROM THE INDIANA DEPARTMENT OF WORKFORCE DEVELOPMENT**

AREA	LABOR FORCE	EMPLOYED	UNEMPLOYED	RATE	Seasonally Adjusted RATE
U.S.					
November 2009	153,539,000	139,132,000	14,407,000	9.4	10.0
October 2009 (Revised)	153,635,000	139,088,000	14,547,000	9.5	10.2
November 2008 (Benchmark)	154,624,000	144,609,000	10,015,000	6.5	6.8
INDIANA					
November 2009	3,104,803	2,816,107	288,696	9.3	9.6
October 2009 (Revised)	3,112,522	2,820,995	291,527	9.4	9.8
November 2008 (Benchmark)	3,223,960	3,002,540	221,420	6.9	7.0
WABASH					
November 2009	15,779	13,964	1,815	11.5	
October 2009 (Revised)	15,834	13,948	1,886	11.9	
November 2008 (Benchmark)	17,182	15,823	1,359	7.9	

## WELCOME NEW MEMBER

**Cinery MetroNet**, 146 W Market St., Wabash, IN 46992 Phone: (260)274-2700 Email: dan.townsend@cinergymetronet.com Web: [www.cinergymetronet.com](http://www.cinergymetronet.com) Contact: Dan Townsend. Cinery MetroNet is a local provider of digital and high-definition cable, high-speed Internet, and full-featured phone over the only all fiber optic network in Wabash.

## THANK YOU TO THE FOLLOWING MEMBERS WHO RENEWED THEIR MEMBERSHIP IN DECEMBER

Agro-Chem, Inc.  
Alumitech  
Asian Buffet  
Beauchamp & McSpadden  
Bob Evans  
Bowman's Candy  
Brainard Snow Removal  
Business Technology Group, LLC.  
CAT Excavating & Construction  
Countryside Veterinary Hospital  
**\*Crossroads Bank**  
**\*Duke Energy**  
**\*First Merchants Bank**  
**\*Ford Meter Box Company, Inc.**  
Great Wall Grand Buffet  
Guenin Law Office  
Halderman Farm Management Service  
Honeywell Foundation  
**\*Indiana American Water Company**  
Indiana Farm Bureau Insurance  
J & K Mega Pets  
Walter Kent  
Kroft Construction  
Make It Your Own Art Studio

Martin Yale Industries, Inc.  
Mattern, Robert, DDS  
Mental Health America Wabash County  
Miller Furniture  
**\*Miller's Merry Manor**  
North Central Cooperative  
Paperworks Industries, Inc.  
Pathfinder Services, Inc.  
Phone Line, Inc.  
Plummer, Al  
Staffing Resources Inc.  
The Body Connection, Inc.  
'the paper' of Wabash county, inc.  
The Write Stuff  
United Tool Company  
Wabash Alloys  
Wabash Appliance & Electronic  
Wabash County YMCA  
Wabash MPI/Carver Inc.  
Wabash Poly Clean  
Wabash Realty, LLC  
Wabash Valley Abstract  
Wabash Valley Abstract  
Youth Service Bureau

\*denotes Gold Member

## Member Orientation Luncheon – Mark Your Calendars!

**Want to know how to get more out of your Chamber investment?** The Chamber Membership Committee and Board of Directors invite you to join us for lunch on Wednesday, February 17<sup>th</sup>, at 1 p.m., in the Chamber Conference Room.

This luncheon will feature fellow Chamber members, board, staff and committee volunteers who will speak about ways to get the most out of your chamber member dues investment. The informal setting is a great way to meet other chamber members and your chamber staff. Also it provides an excellent opportunity to learn first-hand about Chamber benefits and opportunities for your business, while learning from other businesses how they best utilize their membership and what it has meant to them.

To RESERVE YOUR PLACE, email [info@wabashchamber.org](mailto:info@wabashchamber.org) or telephone the office at 260.563.1168.



# JANUARY BLUE RIBBON BUSINESS OF THE MONTH CANAL HOUSE ANTIQUES



This month's featured business is located in historic downtown Wabash, at 36 E. Canal St. **Canal House Antiques** offers a little bit of everything from primitive furniture and tools to baskets and glassware; they also offer tons of books and magazines. There are so many amazing and interesting pieces in the store you just have to come in and see for yourself.

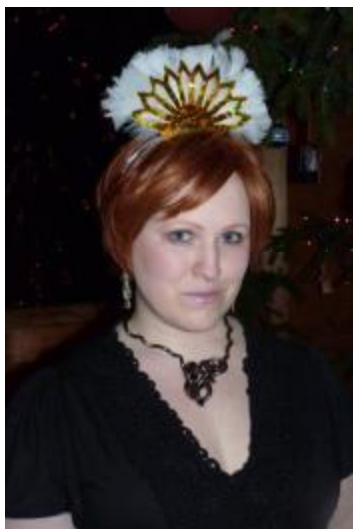
*Patricia Conley, Kathryn and Tom Trissler proudly display the Blue Ribbon Business sign.*

Canal House Antiques is owned and operated by Tom and Kathryn Trissler. The store is open Wednesday through Saturday 11 a.m. – 5 p.m. For more information telephone 260.563.1549 or check out their website at [www.canalhouseantiques.com](http://www.canalhouseantiques.com).



*Pictures: Left - Emily Perkins models New Years hat styles. Center - Emily Perkins, Lindsey Beverly and Josh Steele all had a great time at the New Years Eve Party. Right - "Youngster" Beth Miller shows off dance moves.*

YPN partnered with the Wabash Elks to ring in 2010. This is the second time the two have partnered and put together a successful night of fun. The YPN Board and approximately 50 members enjoyed music from Retro Overload while they waited for the clock to strike midnight. YPN will split proceeds from the 50/50 drawing and the sale of Jell-O Shots with the Elks making the event not only profitable but a great way for them to get their name out in the public. Be looking in the future for many more partnerships between the Elks and YPN, as well as the exciting mixer schedule the YPN Board of Directors is putting together for 2010!



# COMING THIS FEBRUARY – DON'T MISS THIS OPPORTUNITY REDUCE YOUR COSTS – RECEIVE UP TO 100% OF YOUR MEMBER DUES FREE!

**Beginning February 1:** Reduce costs by referring businesses and organizations for membership in the Wabash County Chamber of Commerce. We all do business with a variety of vendors and clients. Some are chamber members, but some are not yet taking advantage of the strength of member benefits. You know best what a benefit Chamber membership is to you and your employees. Who could you contact with our electronic membership brochure and let them know why they need to join? Once you do that, you'll simply go to our website, fill out our simple electronic form, and then we will contact the future member. When they complete their membership application process, YOUR ACCOUNT will be credited 10 percent of the new member's annual dues.

Each referral means additional savings for you, **upto 100 percent of your membership dues** for the next year!

**Remember,** consumers are...

- 44% more likely to think favorably about a Chamber member business than a business which is not a member of the Chamber
- 57% more likely to think positive of its local reputation
- 63% more likely to shop with that business in the future

**PLAN TO PARTICIPATE IN OUR "SAY YES...JOIN NOW!" CAMPAIGN!**

**Save money as you help build the Chamber with our new  
Member Referral Program**

Some of your member benefits include:

Networking Opportunities	Shop Local Programs -- GiftChecks
PHP Health Insurance Discount Program	Business Forums
Member2Member Discount Program	Legislative Updates
Certificates of Origin	FREE Business Development Services
Professional Development	Young Professionals Network

## CONGRATULATIONS WABASH HIGH SCHOOL!

The Wabash County Chamber is pleased to CONGRATULATE WABASH HIGH SCHOOL administrators, faculty, and students for being named an Indiana Best Buy educational facility. Hoosier high schools offering the highest educational achievement levels for the lowest amount of tax dollars were recognized by the Indiana Chamber of Commerce in its 11<sup>th</sup> edition of the "Indiana's Best Buys Report" in December. The study examined 357 Indiana public high schools with the appropriate available data. Using ISTEP+ pass rates, ISTEP+ Pass+ rates, graduation rates, SAT participation rates and average composite scores, and Advanced Placement (AP) passing scores, the Indiana Chamber developed a total school performance index for each school.

"This balancing act of limited funding while realizing a varied and competitive education is no easy task. Businesses and communities in these areas should be very proud of what their schools are achieving and how their students are being readied for further education paths and a competitive job market," states Indiana Chamber President Kevin Brinegar. We say, "Ditto!"

## SHOP LOCAL NEWS!

### 2010 MEMBER<sup>2</sup>MEMBER DISCOUNT CARDS NOW IN CIRCULATION!

**Save money** by supporting fellow Chamber members! Twenty-nine businesses chose to participate in this year's Member<sup>2</sup>Member Discount Card Program. There was no cost to members to participate, we simply put your company information and discount on the card and distributed them to the 7,500 employees of our member companies. These cards are good through December 31<sup>st</sup> and are a great way to support local businesses.

This year's card was made possible by the sponsorship of [Physicians Health Plan of Northern Indiana](#), who offers up to a 5% health insurance discount for Chamber members, based upon your company's criteria.



#### Other member discounts available include:

Great Wall	10% off Buffet & Carry-Out
Border Patrol Curbscaping	10% off Custom, Colored Decorative Landscape Curbing (min. order 100')
First Farmers Bank & Trust	Receive \$50 with New Deposit Account
Lori Overmyer Photography	\$25 off Setting Fee
GoodFellas Pizza	\$2 off 18" pizza and \$1 off 16" pizza
Daywalt Pharmacy	20% off any greeting card
Denney Motor Sales	\$5.00 of scheduled Maint. Appt (limit 2/yr)
Bowman's Candy	10% Discount
Wabash Gardens Restaurant	Free Soft Drink w/Meal Purchase
Wells Fargo Bank	½% savings on Personal Loan w/Check-Sav Acct
Visionary Computers	10% off labor
Friermood Tire & Alignment	\$10 off Transmission or Radiator Flush Service
Pizza King	\$2 off 14" – 2 topping pizza
Rabb/Kinetico Water Systems	10% Discount on any purchase
J&K Mega Pet	\$5 off any \$30 purchase
First Merchants Bank	\$10 when open a checking account
Kirtlan Automotive	Free Tire Rotation w/oil change
Modoc's Market	15% off Coffee Bar Drinks
Dorais Chevrolet	\$5 off Lube, Oil&Filter; Cars & Lt. Trucks
Ponderosa	15% Discount on 1 entrée
Asian Buffet	10% Discount Buffet & Carry-Out
Big Brick House Bakery	5% Discount
Miller's Cool Running Canoes	10% Discount
Portraits by Kimberly	10% Discount
Ugalde's Restaurant	10% Discount after 5 p.m.
Astro-Glyde Mobile DJ Service	10% Discount
Adventures in Advertising	\$5 off \$50 purchase
Kitchens Plus	15% off any regular priced item



# LOWER YOUR COSTS MEMBERSHIP BENEFIT OF THE MONTH :

## PHP HEALTH INSURANCE DISCOUNT PROGRAM

**ARE YOU TAKING ADVANTAGE** of the PHP Health Matters Program? PHP recently announced their NEW guidelines, which means MORE MEMBERS now qualify to take advantage of this great MEMBER BENEFIT. **Currently, our members who are participating saved an average of \$1,806.36 per year!**

Guidelines:

- Includes employers with 2 – 50 employees eligible for health insurance coverage.
- Chamber members new to enroll with PHP will receive up to a 5% discount off community-based rates.
- Chamber members already enjoying the benefits of PHP coverage will receive up to a 5% deduction from the rate increase that would have been given at renewal of their coverage.
- All existing and renewal businesses will receive their renewal correspondence outlining, in dollar terms, how much their annual savings are because they are Chamber members.



PHP, in conjunction with the Wabash County Chamber of Commerce, is offering a discount up to 5% on employee health insurance. Select the PHP plan of your choice and save. All you have to do is be a Chamber member or join today, and have a business with 2-50 employees that are eligible for coverage. Save money by staying local with your health insurance, courtesy of PHP, the physician-owned, not-for-profit health insurance company. To sign up or find out more contact PHP or call the Chamber at 563-1168.

800-982-6257      [www.phpni.com](http://www.phpni.com)



The insurance your health deserves.

©2009 PHPNI, Inc

# MEMBERSHIP UPCOMING EVENTS

By

Chasity Milliner, Membership Services Coordinator

## Don't Miss this Ribbon Cutting and Special Open House! Great New Facility and New Services

**J&K Mega Pets Ribbon Cutting** – Wednesday, January 13 @4:30 pm. They will be celebrating their new location at Wabash Crossing location, 1425 North Cass St., Wabash. They have expanded into their new store utilizing 29,000 square feet! With all of this space they now have enough room to house a new indoor dog park, dog grooming services, a vet clinic, a do-it-yourself dog bath, and a waiting area. A much larger area is now available for animal rescues to utilize; Mr. Henderson and his dog club will be conducting dog obedience classes; Jenny Howard & Roxanne Mann will be grooming daily by appointment; and Jeff Biehl, of Cornerstone Veterinary, has opened a satellite clinic in the back of the store where he takes appointments, are just a few of the many products and services offered. To kick off the opening of the new store they will be offering 20% off storewide from 4:30 p.m. to 8 p.m. (This excludes cat and dog food.) This is an event you do not want to miss!!

Counselors from the **Small Business Development Center** visit Wabash four days each month to offer services to our local business people. If you are interested in a new business start-up, new product development, creating or updating a business plan, or just want to review how your business is doing, these counselors are here to help you. The counselors work out of the Chamber offices and these services are FREE. Ken McCrory is available by appointment on the 1st, 2nd, and 4th Tuesdays of every month. On the 3rd Thursday of the month, Scott Goskowicz will be hosting a “Launching your Business” seminar for those interested in getting started in business. It is held from 11:00 a.m. to 1:00 p.m. A \$25 fee is required. Call the Chamber to make appointments for counseling or to register for classes, 260-563-1168.



**Lunch Bytes Seminar** – Thursday, January 14 @ 12:00pm – 1:00pm. Robert Duke of First Farmers Bank & Trust will be speaking on *Outlook Calendar “The Green Planner”, More than Just Dates* – Sponsored by Ampro. Learn how to utilize more features of your Outlook Calendar and eliminate the need for a pen/pencil planner. No more need to kill trees to keep on top of your appointments, meetings and business contact information. For more information or to make your reservations please call 260-563-1168 or email [info@wabashchamber.org](mailto:info@wabashchamber.org).

## BUSINESS BEFORE HOURS



The next **Business Before Hours** will be February 10, 7:00 a.m., at the Honeywell Center, 275 W. Market St., Wabash. Business Sponsors are

- **Jim Banks, Candidate fro State Senate**
- **FAME Festival**
- **Ivy Tech Community College**
- **Milliner Printing Company**
- **Reynolds Oil**

The emcee will be **Kathy Jones, First Farmers Bank & Trust.**

To make reservations call the Chamber office at 260.563.1168, email [beth@wabashchamber.org](mailto:beth@wabashchamber.org) or visit our web site at [www.wabashchamber.org](http://www.wabashchamber.org).

## DON'T MISS THIS GREAT NETWORKING OPPORTUNITY!!

January 14

Beacon Credit Union

## BUSINESS AFTER HOURS

The next Business After Hours is scheduled for January 14, 4:30 - 6:00 p.m. The sponsor will be **Beacon Credit Union**, located at 100



Wedcor Avenue. Don't miss this opportunity to visit the newest branch of Beacon Credit Union and see everything they have to offer. They will be giving tours of the building.

## BOARD MEMBERS

2009-2010

Rob Pearson, Chair  
Wabash County REMC  
Mark Sapusek, Chair Elect  
Visionary Web/Computers  
Marilyn Custer-Mitchell, Vice Chair  
Wabash County Hospital  
Doug Mays, Treasurer  
Thermafiber  
Brian Campbell  
Randall Miller & Associates  
Trisha Metzger, Past Chair  
Crossroads Bank  
Kimberly Pinkerton, President  
Chamber of Commerce

Skip Daughtry  
Beauchamp & McSpadden  
Chris Goff  
Judge, Superior Court  
Phil Brown  
Alumitech  
Angie Beauchamp  
Modoc's Market  
Larry Hoover  
Quality Electric  
Lindsay Barnett  
Midwest Eye Consultants  
Matt Mize  
Attorney  
Brad Thurmond  
Ivy Tech Community College  
Deborah VanMeter  
Huntington University  
Lance Agness  
Ford Meter Box Company  
Steffany Pegg  
Wabash County YMCA  
Jeremy Steele  
First Merchants Bank  
Kristi Lundquist  
Lundquist Appraisals  
Darin Hadley  
Wells Fargo Bank  
Bill Konyha  
EDG Wabash County  
Mayor Robert Vanlandingham  
City of Wabash  
Dan Hannaford  
Town of North Manchester

## Upcoming Events



January 12	10:00 a.m. - 4:00 p.m.	SBDC Counseling Chamber Office
January 13	4:30 - 8:00 p.m.	Ribbon Cutting and Open House J & K Mega Pets
January 14	12:00 - 1:00 p.m.	LunchBytes Chamber Conference Room
January 14	4:30 - 6:00 p.m.	Business After Hours Beacon Credit Union-North Branch
January 26	10:00 a.m. - 4:00 p.m.	SBDC Counseling Chamber office
February 10	7:00 - 8:30 a.m.	Business Before Hours Honeywell Center
March 6 & 7		2010 Expo Oddysey

# GOLD MEMBERS

We thank and salute those member businesses who carry GOLD LEVEL status:

**Beacon Credit Union  
Pettit Printing, Inc.  
Crossroads Bank  
Charley Creek Foundation  
Bulldog Battery  
Wells Fargo Bank  
Miller's Merry Manor  
First Merchants Bank  
Ford Meter Box Co., Inc.  
First Farmers Bank & Trust  
Physicians Health Plan of Northern Indiana, Inc.  
Dr. James Ford Historic Home  
Indiana American Water Company  
Mutual Bank  
Duke Energy  
Visionary Web**



Any Wabash County Chamber Member can elevate their membership status to Gold Level by investing an additional \$500 above their regular membership investment. In addition to having their company acknowledged at Chamber events and in publications, Gold Level Members receive \$100 in Chamber Bucks and receive a free large rotating banner ad on the Chamber website.



Wabash County Chamber of Commerce  
presents



# **NETWORKING OPPORTUNITY – DON'T MISS**

## **BUSINESS AFTER HOURS**



**100 Wedcor Avenue  
Wabash**

**January 14, 2010  
4:30 - 6:00 p.m.**



**Check out this  
great Wabash  
business!**

- ◆ Great Networking Opportunity
- ◆ Refreshments
- ◆ Tours
- ◆ No Charge

To make your reservation contact the Chamber at 260.563.1168,  
Fax: 260.563.6920 or email [info@wabashchamber.org](mailto:info@wabashchamber.org)

**Reservations Requested**

# 2009-2010 LUNCH BYTES SEMINAR SERIES

All Seminars are held from 12:00 - 1:00 p.m. in the Chamber office

## Using the Intranet to Serve Your Business

Anita Wildman, Beacon Credit Union  
Thursday, September 10, 2009

**Sponsor: Hagerman, Inc.**

Have you longed for an easier way to quickly communicate and build a stronger team among the members of your organization or within your building? Then this is the session for you! Come learn about using an INTRANET to enhance working relationships.

## PowerPoint - Adding the WOW Effects

Jennifer McCuan, Midwest Eye Consultants  
Thursday, November 12, 2009

**Sponsor: Bulldog Battery Corporation**

Wow your audience with sound, video, color and animation for your Power Point presentations. Come and learn how you can set your professional presentations apart from others.

## Outlook Calendar® - The Green Planner - More than Just Dates

Robert Duke, First Farmers Bank & Trust  
Thursday, January 14, 2010

**Sponsor: AMPRO**

Learn how to utilize more features of your Outlook Calendar and eliminate the need for a pen/pencil planner. No more need to kill trees to keep on top of your appointments, meetings and business contact information. Notes, files, etc. are easily adapted to this green technology; especially as you integrate with your other mobile devices.

## Being Exceptional, Living Large - Winning Your Inner Game

Brad Denham, Professional and Personal Development  
Thursday, March 11, 2010

**Sponsor: First Farmers Bank & Trust**

You will learn How to Outsmart Your Problems; How to manage your biggest health risk- STRESS!; and Peak Performance - Is it difficult work or hard work? Take advantage of the opportunity to learn how to be exceptional and win your personal battles.

## Creating Fillable Documents in Word

Jerry Perkins, Ivy Tech Community College  
Thursday, May 13, 2010

**Sponsor: Thermafiber**

Do you long for documents that people can fill in online and quickly send back to you via email? Then this is the session for you. Take your company to the next level with fill-in documents that may be accessed from your website or easily sent by email.

Please register me for the  
"Lunch Bytes" Seminar Series.

Name(s): \_\_\_\_\_

Company: \_\_\_\_\_

Number Attending: \_\_\_\_\_

Sessions \$12 each - member rate  
(\$24 non-member rate)

Series \$50 - member rate - SAVE \$10  
(\$110 non-member rate)

Please indicate which session(s) you wish to attend by circling the appropriate number(s):

1 2 3 4 5

Or register online —

[www.wabashchamber.org](http://www.wabashchamber.org)

Payment is enclosed for: \$ \_\_\_\_\_

Check# \_\_\_\_\_

(payable to Wabash Co. Chamber of Commerce)

Bill me (Add \$1 invoicing fee)

### Credit Card Information:

Visa  AmExp

Discover  M/Car

Account# \_\_\_\_\_

Exp. Date: \_\_\_\_\_

Signature: \_\_\_\_\_

### Return to:

Wabash County Chamber of Commerce  
210 S. Wabash St.  
Wabash, IN 46992  
Tel. 260-563-1168  
[info@wabashchamber.org](mailto:info@wabashchamber.org)

The Lunch Bytes Seminar Series is made possible in part by the support of these

## Gold Level Chamber Members

Beacon Credit Union

Bulldog Battery Corporation

First Farmers Bank & Trust

Ford Meter Box Company, Inc.

Indiana American Water Company

First Merchants Bank

Dr. James Ford Historic Home

Pettit Printing, Inc.

Physicians Health Plan

Wells Fargo Bank

Miller's Merry Manor

Charley Creek Foundation

Mutual Bank

Duke Energy

Crossroads Bank

## 2009-2010 Lunch Bytes SEMINAR SERIES

The Lunch Bytes Seminar Series is designed to be a cost-effective form of employee development. We provide lunch and the speakers which allow your employees to develop their skills.

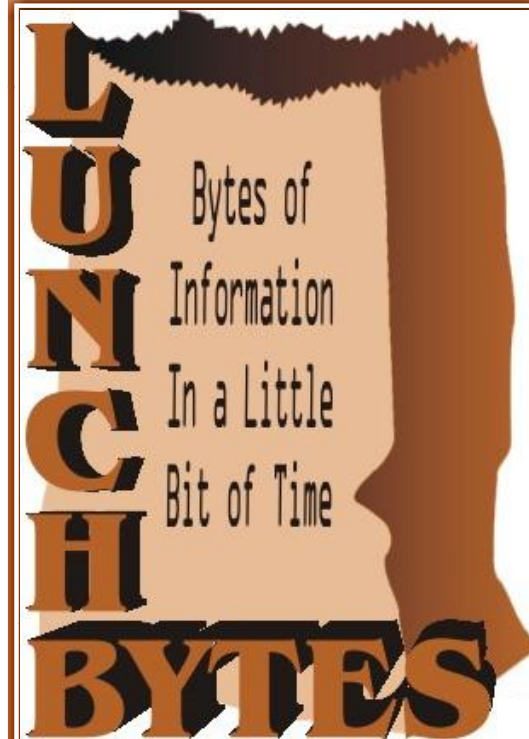
The sessions are held on alternating months from September to May on the second Thursday of each month. The one hour sessions are presented at 12:00 noon.

All sessions are held at

Wabash County  
Chamber of Commerce  
210 South Wabash Street  
(2nd floor of City Hall)  
Wabash, Indiana  
260.563.1168  
[info@wabashchamber.org](mailto:info@wabashchamber.org)  
[www.wabashchamber.org](http://www.wabashchamber.org)

 ADA Compliant

This series was arranged through the efforts of the Chamber Seminar Committee, Chaired by Lori Eltzroth, Beacon Credit Union.



## 2009-2010 SEMINAR SERIES



PRESENTED BY

**Wabash County  
Chamber of  
Commerce**



WBCL Welcomes

# Phillips Craig & Dean

Sponsored by Halderman Farm Management Service  
and Grandstaff-Hentgen Funeral Service

Fri., Feb. 5 • 7:30 pm

Tickets: \$12, \$18, \$24, \$50

 honeywellcenter wabash • 260.563.1102  
[www.honeywellcenter.org](http://www.honeywellcenter.org)